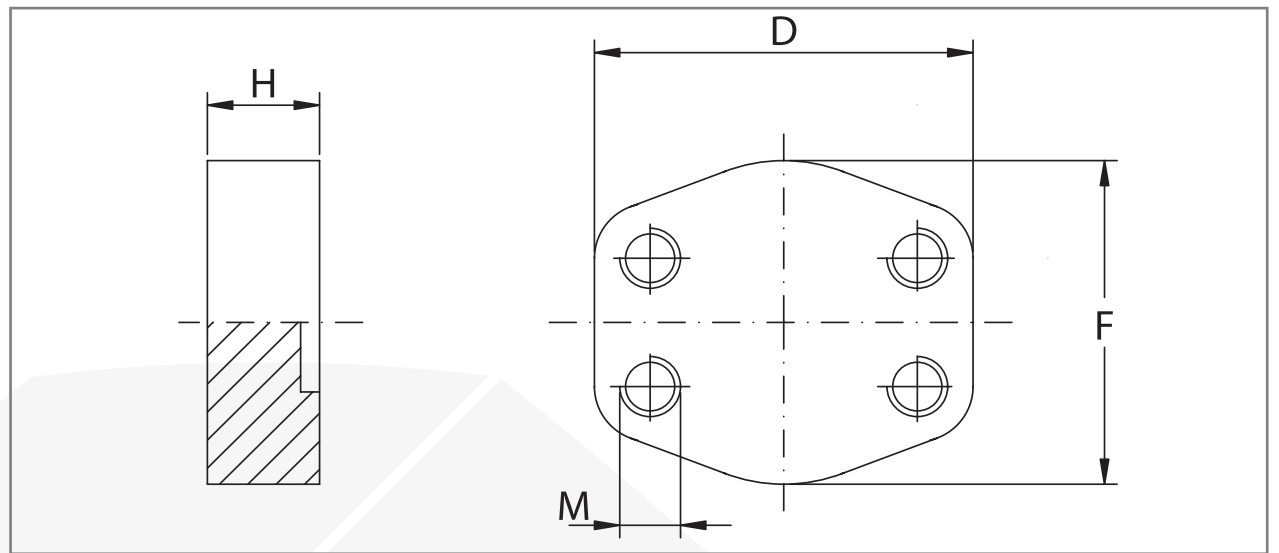




CONTRABRIDAS  
CIEGAS  
BLIND  
COUNTER -  
FLANGES

OSSO FACTORY



Presion maxima/ maximum pressure Kg/cm <sup>2</sup>	Medida/Size	Tipo/Type	Dimensiones/ Dimensions					
			D	F	H	M		
<b>SERIE 3000</b>							Metrico/Metric	UNC
345	3/4"	BLC-3000-12	65	50	16	M10	3/8"	
345	1"	BLC-3000-16	70	60	19	M10	3/8"	
276	1"1/4	BLC-3000-20	79	68	18	M10	7/16"	
207	1"1/2	BLC-3000-24	93	78	20	M12	1/2"	
207	2"	BLC-3000-32	102	90	20	M12	1/2"	
172	2"1/2	BLC-3000-40	114	105	20	M12	1/2"	
138	3"	BLC-3000-48	134	124	24	M16	5/8"	
34	3"1/2	BLC-3000-56	152	136	22	M16	5/8"	
34	4"	BLC-3000-64	162	146	25	M16	5/8"	
<b>SERIE 6000</b>								
414	3/4"	BLC-6000-12	71	60	19	M10	3/8"	
414	1"	BLC-6000-16	81	70	24	M12	7/16"	
414	1"1/4	BLC-6000-20	95	78	27	M14	1/2"	
414	1"1/2	BLC-6000-24	112	94	30	M16	5/8"	
414	2"	BLC-6000-32	134	114	30	M20	3/4"	

DESIGNACIÓN POR PEDIDO DESIGNATION FOR ORDER	MATERIAL	
	1045/1020	AISI 316L
Contrabrida con orificios de fijación roscados métricos Counter-flange with metric threaded fixing holes	MBLC..	MIBLC..
Contra brida con agujeros de fijación roscados unc Counter-flange with unc threaded fixing holes	UBLC..	UIBLC..